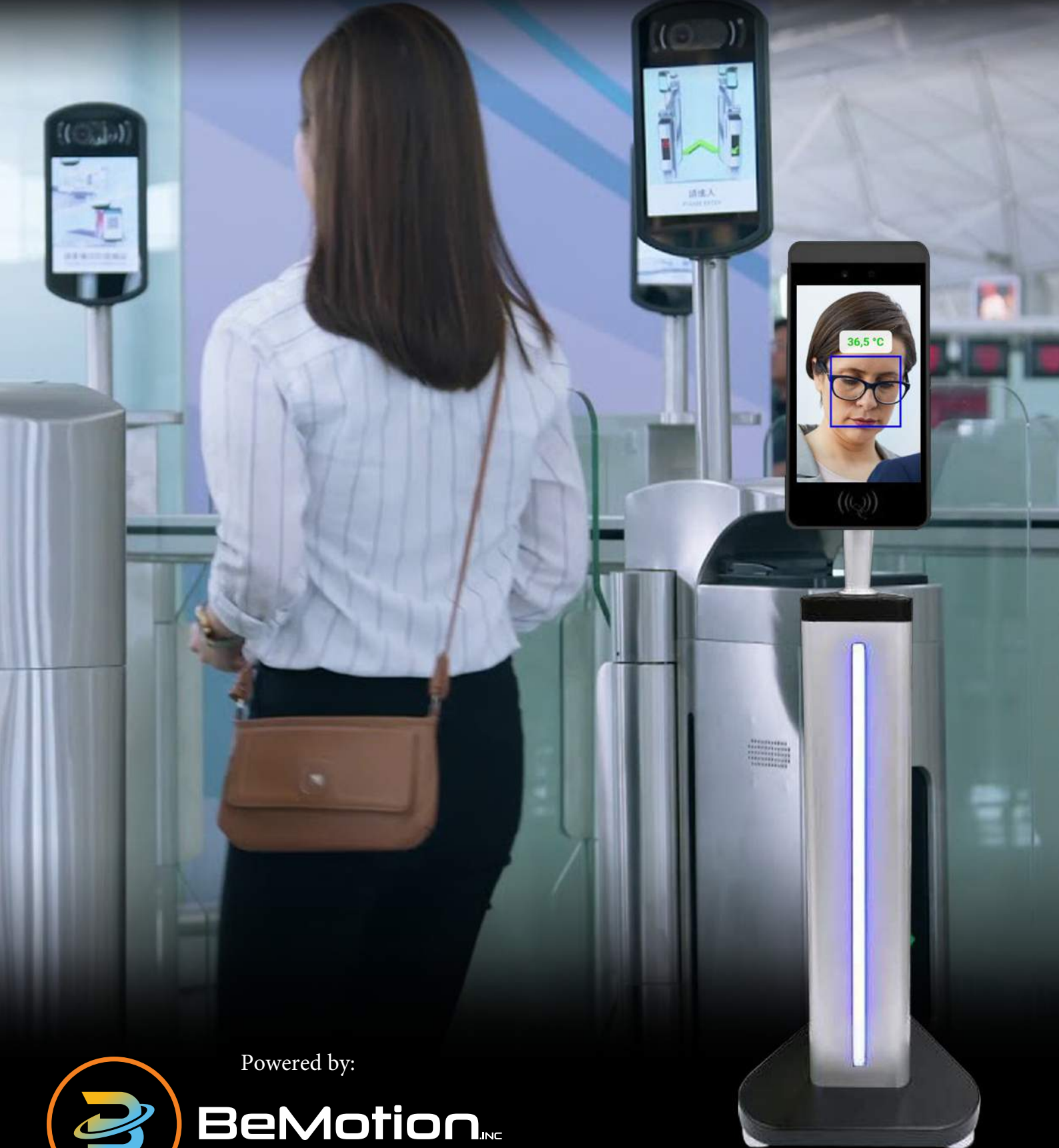




Non-Contact
Temperature
Screening Imager

Duo32 Smart Non-contact Human Temperature Screening Technology



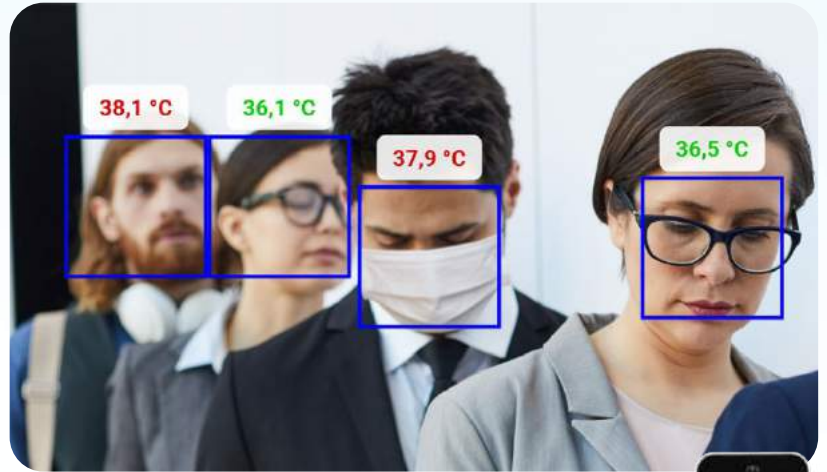
Powered by:



BeMotion_{INC}

DUO32 smart face thermometer recognition system

BeMotion Inc., **DUO32** human non-contact temperature thermometer is mainly used for the body Temperature measurement in crowded areas such as railway stations, and Airports. With AI smart face recognition system, the device can provide one-stop solution To identify and measuring targets' temperature.



DUAL VISION

Provide both 'thermal' and 'visible light' channel to look into details

8 INCH HIGH RESOLUTION DISPLAY

Apply full view LCD display of human face

30,000 FACE LIBRARY

Support 30000 face library for face recognition of tracking and matching.

±0.3 °C ACCURACY

Super high temperature measurement accuracy

SMART AI TECHNOLOGY

Integrate human facial recognition system

99.7% RECOGNITION RATE

99.7% high face recognition success rate

AUTO ALARM SYSTEM

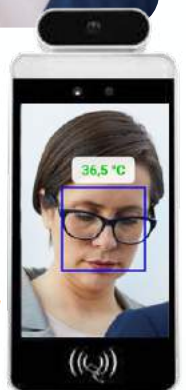
Auto alarm system for fever temperature targets

DUA ILLUMINATION

LED and IR illumination

EXPANSION SUPPORTED

Support various peripheral expansion such as ID card reader, fingerprint reader,



The Technology that saves lives

COVID-19 is highly contagious, the BeMotion team is proud to launch the **DUO32** dual vision non-contact intelligent thermal Imager that helps improving the screening of human temperature. The non-contact temperature measurement system reduces the danger of human infection.



DUO32 Technical Parameters

Smart-Vision Temperature Screening Technology

THERMAL DETECTOR

Detector	Uncooled
Resolution	32*32 , 80*60 , 160*120 , 260*195
NETD	<40mk
Spectrum Range	8-14um
Pixel Size	30um
Frequency	30Hz
Focus	Automatic

TEMPERATURE MEASUREMENT

Range	25 ~ 45°C
Measuring Accuracy	0.3°C (Target temperature: 30 ~ 45°C)
Measuring Range	0.5m - 1m

VISIBLE LIGHT

Resolution	1920*1080
F Value	F 2.0
Min.Lux	Color 0.001 lux

FUNCTIONS

Facial Recognition	Yes
Face Detection Library	30,000
1:N Face Recognition	Yes
Recognition Efficiency	<0.3s
Face Tracking	Yes
1:1 Face Comparison	Yes

SCREEN AND DISPLAY

Resolution	1280*800
Illumination	IR and Led
Size	8.0 Inch IPS screen
CPU	RK3288 4 Core

GENERAL

Working Temp	2°C ~ +50°C
Storage Temp	20°C ~ +60°C
Dimension	273mm*126mm*21mm
Weight	<1.4 kg



ID : 758426592

37.2 °C

ID : 254...

36.9



BeMotion.INC

For any additional information please contact us at
info@bemotioninc.com, www.bemotioninc.com